

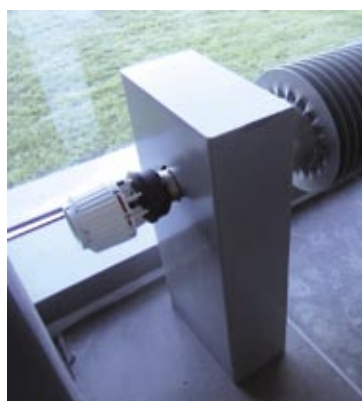


MEINERTZ FINNED TUBES

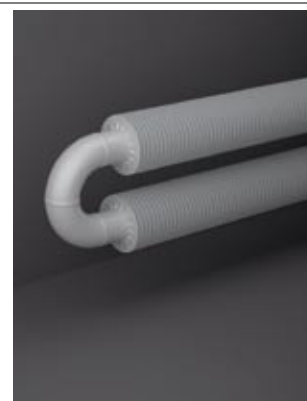
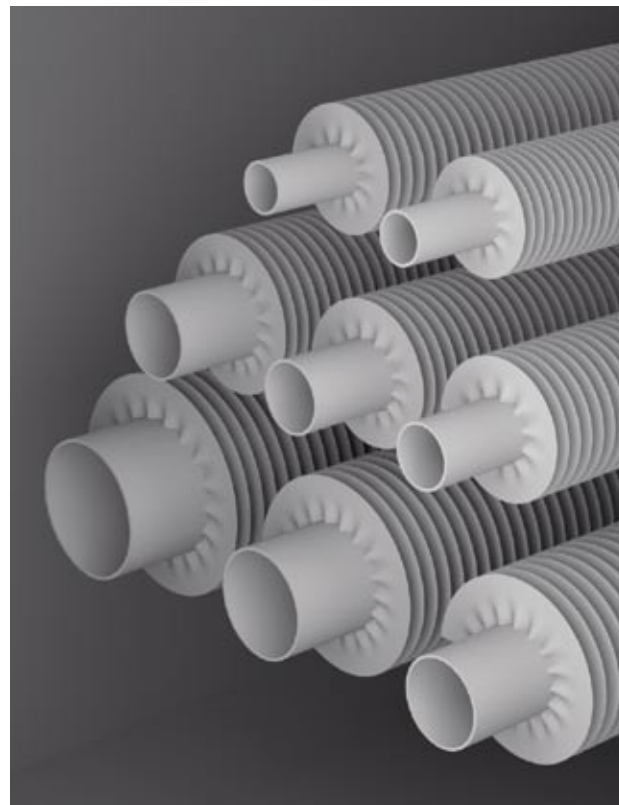
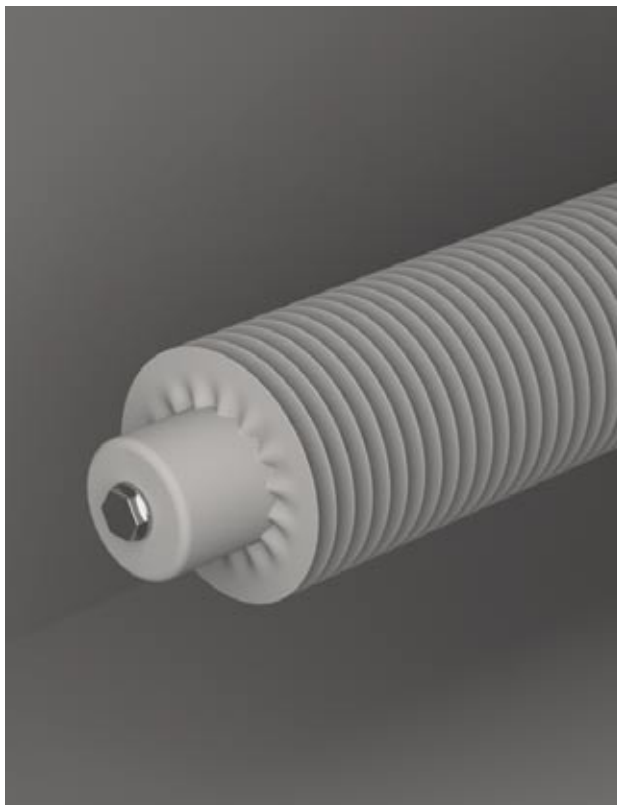


MEINERTZ





Finned tubes A design feature and an efficient heat source for large rooms, or to guard against cold downdraughts beside large window panels. With an expression that can be raw and rustic or beautifully integrated into the architecture through the choice of colours and installation, finned tubes are ideal for all kinds of renovation projects and in new property – from industrial and agricultural complexes to offices and public buildings. Finned tubes can be used individually or in groups, and can be mounted in a wide variety of different ways on walls, floors or ceilings. The heat output is optimised via carefully calculated relations between the individual elements.

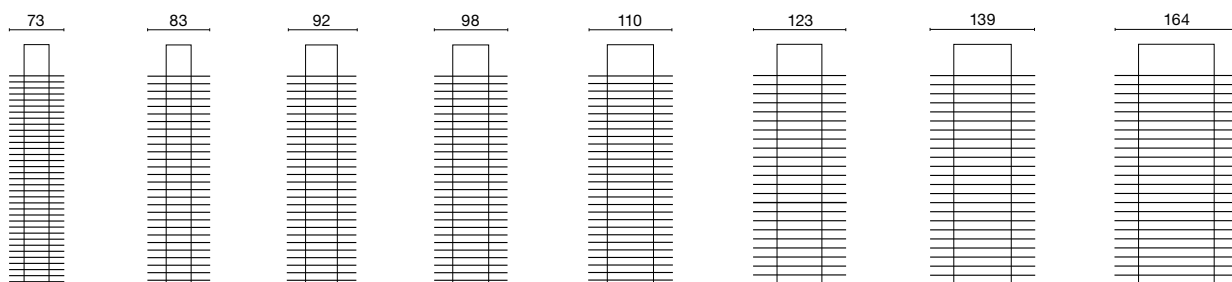


Raw and rustic, or chic and colourful – it's up to you

FINNED TUBES

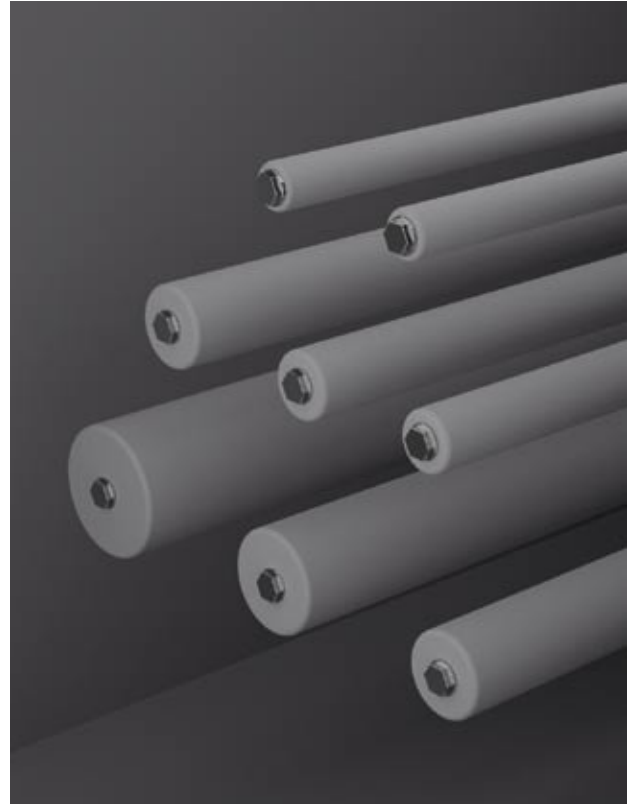
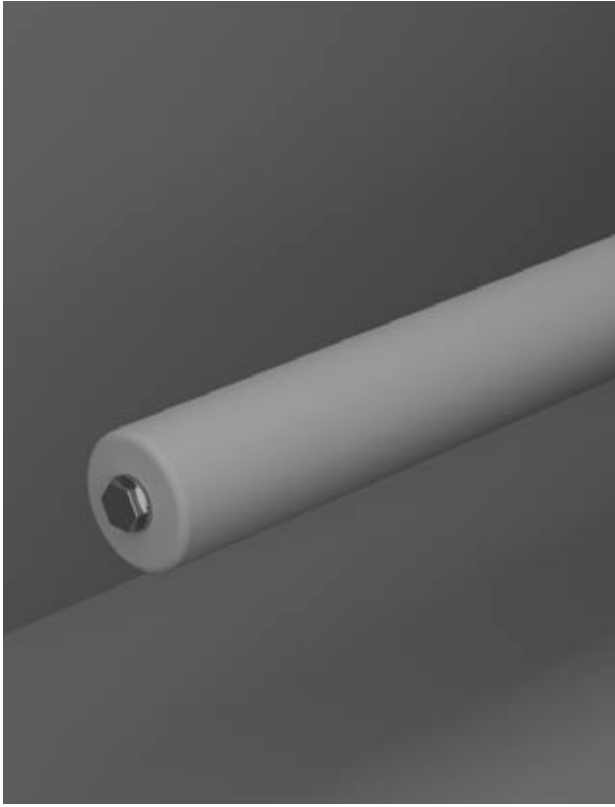
Length max. 6000 mm

Diameter





Plain tubes A solution which can be distinctive or minimalist. The round forms can harmonise with arches and columns, provide a contrast to rectangular architecture, or mark the transition from floor to glass. Tubes in diameters from 33.7 mm to 101.6 mm and in lengths of up to 6000 mm can be integrated with various kinds of brackets to allow one or more tubes to be mounted on the wall, floor or ceiling. The tubes and brackets are supplied powder-lacquered in any RAL or NCS colours.



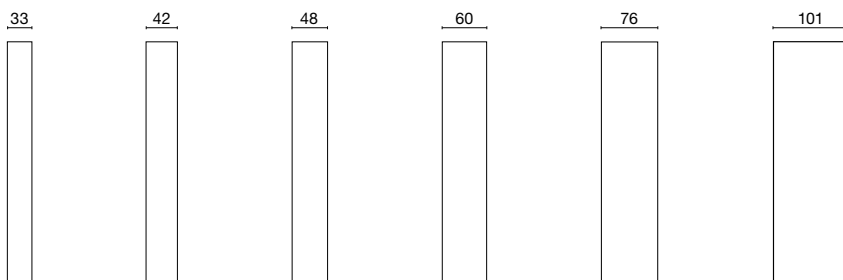
For architecture
with clean
lines

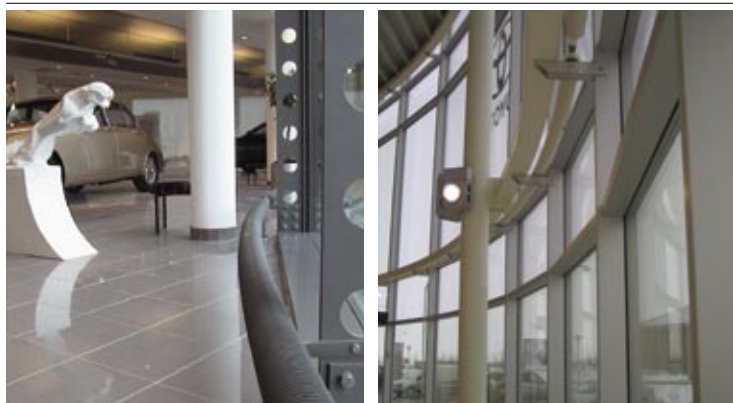
Simple,
elegant and
efficient

PLAIN TUBES

Length max. 6000 mm

Diameter





Curved tubes When the architecture involves curving facades or vaulted ceilings, the space heating can harmonise with the concept. Both finned and plain tubes are available in curving versions in individual dimensions. You can choose between many different kinds of standard brackets for wall, floor or ceiling mounting, and we have plenty of experience in producing custom solutions to match individual window assemblies.



MEINERTZ
When architects
think outside
the box

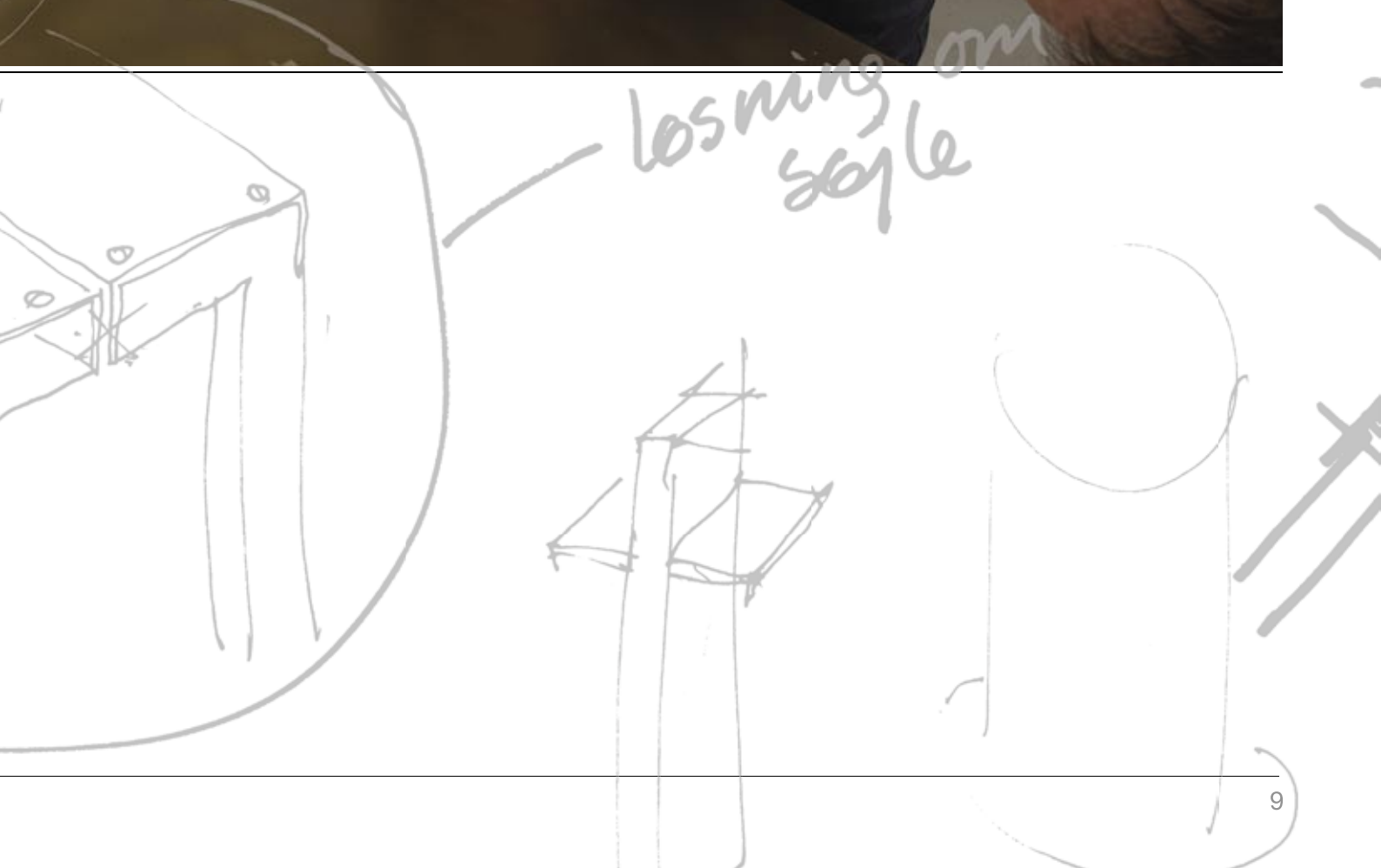
When the
architecture departs
from the straight
and narrow

When traditions
are there to be
challenged or
conserved



MEINERTZ RadLab is an exploratorium for architects, designers and others who work to create buildings in which all of the details form a harmonious architectural whole. MEINERTZ RadLab has everything you need to create or try out ideas for heaters as architectural elements, in the company of experienced heating design professionals. MEINERTZ RadLab is a combination of playground and workshop, where creativity, functionality and fine craftsmanship go hand in hand.

Design your own radiator, next time you are working on a project that deserves more than just a standard solution. Try a workshop at MEINERTZ RadLab.



Technical data

Finned tubes

Lengths:

MEINERTZ finned tubes are supplied in the precise lengths desired, up to 6 metres.

Colours:

As standard, all MEINERTZ products are supplied powder-lacquered in the colour RAL 9016 (traffic white), but other RAL and NSC colours are available on demand. Finned tubes can also be supplied hot galvanised, or in special materials for thermal tasks.

Mounting:

MEINERTZ finned tubes can be mounted on walls or floors with the help of standard brackets. If you have any special fitting requirements, we will be happy to design and manufacture special brackets. All brackets are supplied in the same colour as the finned tubes.

Delivery:

All MEINERTZ products are custom-made for the individual projects, but our efficient production system ensures short delivery times.

Environment:

MEINERTZ is a CO₂-neutral company that exclusively utilises energy from alternative energy sources. All of our products are made of materials that are 100% recyclable. All our transport packaging is made from wood. All excess powder used in the powder-lacquering process is recycled in our high-efficiency paint cabin.

Further information:

Technical data sheets and information on type designations, performance, sockets, etc. may be downloaded from www.meinertz.com or obtained from our consultants.

You can find lots of ideas for creative uses of MEINERTZ products at our website and in inspiration catalogue.





MEINERTZ is more MEINERTZ means Danish design and craftsmanship. All of our products are custom-made in Denmark to match the dimensions and requirements of the individual projects. In addition to finned tubes and plain tubes, MEINERTZ also supplies convectors and radiators, ProLine convection grilles and Convec comfort panels, which, for example, provide optimum possibilities for integrating heaters into buildings which feature glass panels from floor to ceiling. MEINERTZ provides guidance in the planning phase, assistance with measurement, and follow-up service when the installation is in operation.

MEINERTZ A/S

Sverigesvej 11
DK-8660 Skanderborg
Denmark
Tel. +45 8652 1811
Fax +45 8652 1515
E-mail meinertz@meinertz.com
www.meinertz.com

MEINERTZ